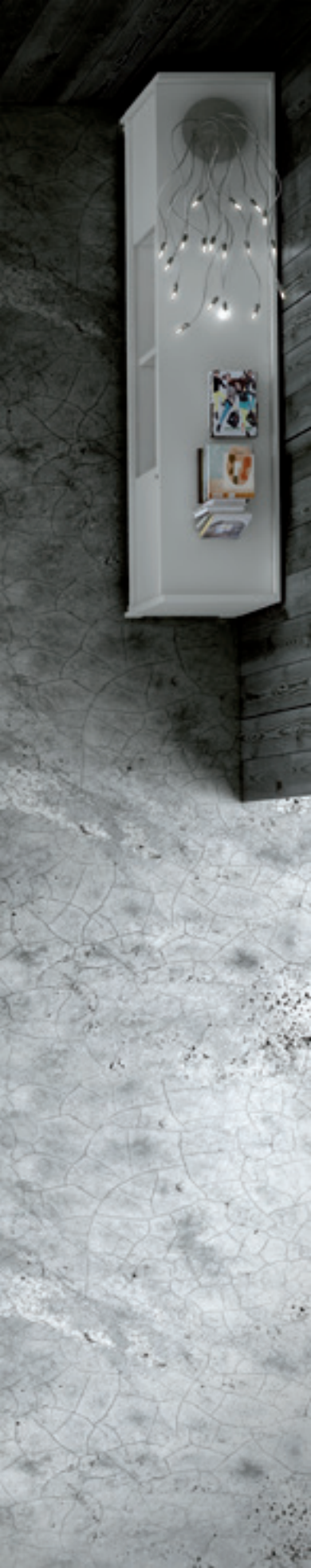


A modern office interior with white desks, black ergonomic chairs, and a wooden wall. The scene is lit by long, horizontal pendant lights. A large, dark circular graphic is overlaid on the center of the image, containing the text.

INFINITE SOLUTIONS
ADAPTAPLUS



INFINITE SOLUTIONS
ADAPTAPLUS



MÁS DE 50 MEJORAS EN ADAPTA PLUS.

Siete años después del lanzamiento de Adapta y después de equipar más de 100.000 puestos de trabajo en más de 30 países, presentamos la nueva generación de Adapta, ADAPTA PLUS.

Una apuesta decidida por evolucionar y actualizar un producto creado y desarrollado en nuestra fábrica, que ha incorporado más de 50 novedades en el programa.

Mejoras estéticas, ergonómicas, funcionales y por supuesto medioambientales convierten a Adapta Plus en un programa de referencia, con una excelente relación calidad/precio, para aquellos prescriptores y distribuidores que desean equipar cualquier espacio de trabajo con una sola marca que entienda sus necesidades de una forma completa.

PLUS DE 50 AMÉLIORATIONS SUR ADAPTA PLUS.

Sept ans après le lancement d'Adapta et après avoir équipé plus de 100 000 postes de travail dans plus de 30 pays, nous présentons la nouvelle génération d'Adapta, ADAPTA PLUS.

Un pari pour l'évolution et la mise à jour d'un produit créé et développé dans notre usine, avec plus de 50 nouveautés.

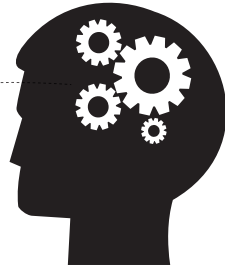
Des améliorations esthétiques, ergonomiques, fonctionnelles et bien sûr environnementales, font d'Adapta Plus un programme de référence, jouissant d'une excellente relation qualité-prix, destinée aux prescripteurs et distributeurs souhaitant équiper un espace de travail avec une marque, qui répond parfaitement à leurs besoins.

OVER 50 IMPROVEMENTS IN ADAPTA PLUS.

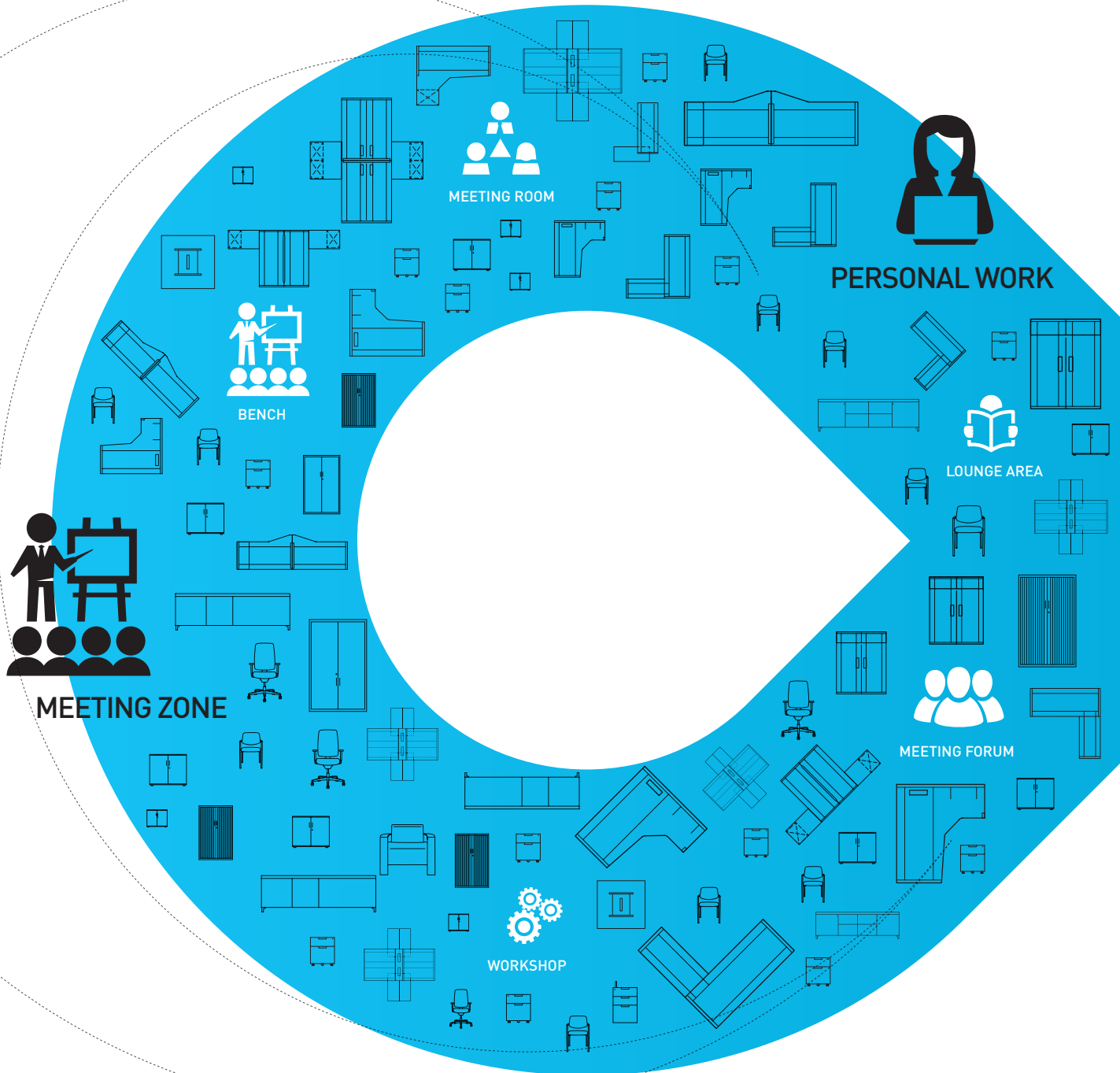
Seven years after the launch of Adapta and after fitting out more than 100,000 workstations in over 30 countries, we are proud to present the new Adapta generation, ADAPTA PLUS.

It has meant evolving and updating a product created and developed in our factory and where we have added more than 50 new features to the programme.

They are visual, ergonomic, functional and, of course, environmental improvements that make Adapta Plus into a benchmark programme giving excellent value for money for influencers and distributors who want to fit out any workspace with a single make that fully understands their needs.



INFINITE SOLUTIONS ADAPTAPLUS



Adapta Plus, interpreta y acomoda los cambios culturales, económicos y sociales que reinventan a diario la forma de pensar y trabajar en nuestra sociedad.

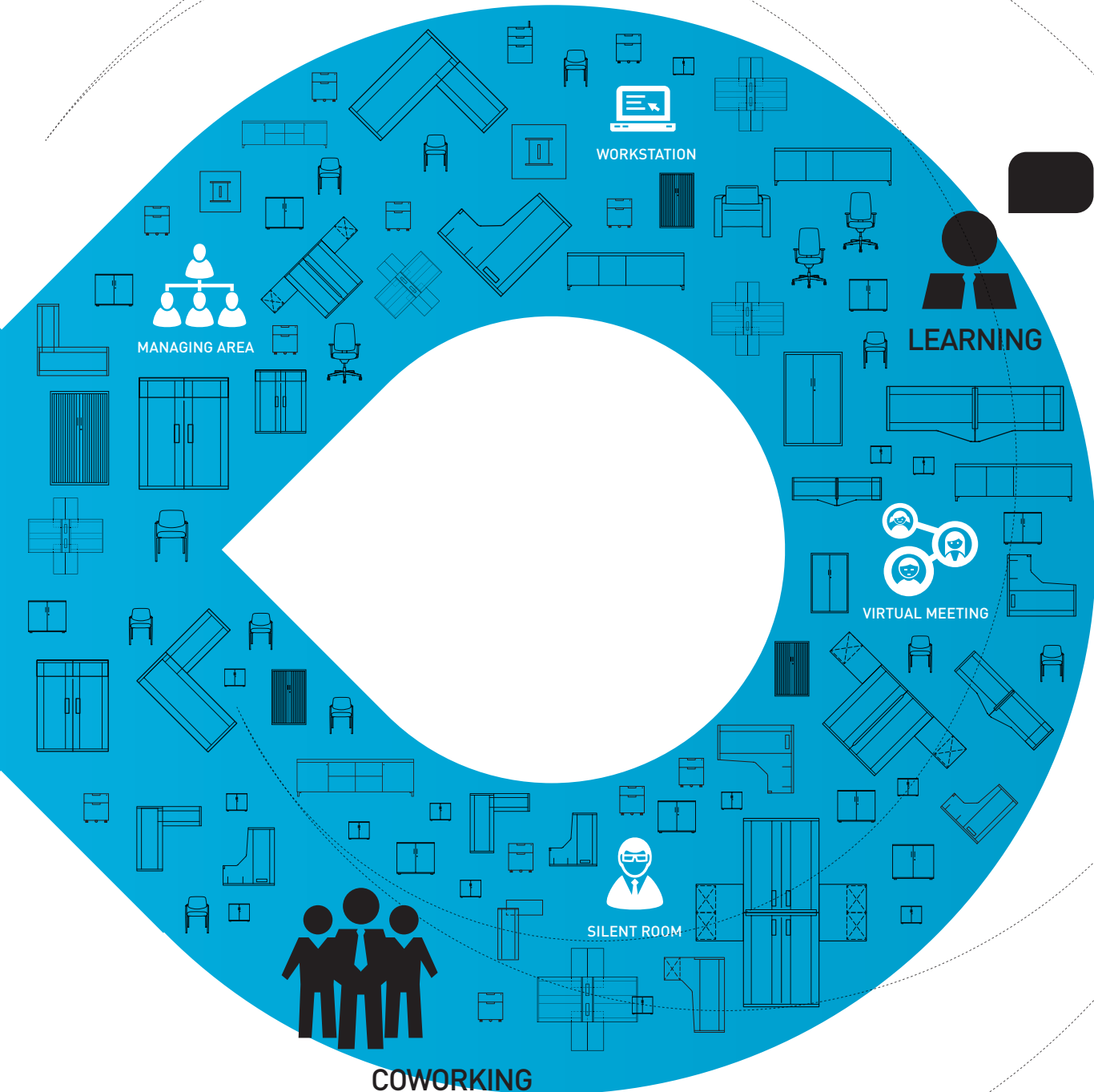
Adapta Plus interprète et adapte les évolutions culturelles, économiques et sociales qui remodelent jour après jour la façon de penser et de travailler dans notre société.

Adapta Plus interprets and accommodates the cultural, social and economic changes that are reinventing the way we think and work in our society.

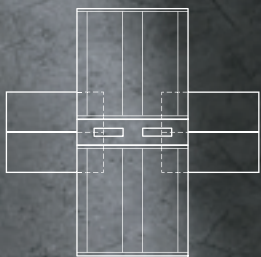
Nuevas formas de trabajar, reflexionar y colaborar compartiendo conocimiento entre personas de cualquier lugar del mundo, mediante la incorporación de tecnología.

De nouvelles façons de travailler, de réfléchir et de collaborer en partageant les connaissances entre personnes des quatre coins au monde, via l'incorporation de la technologie.

New ways of working, thinking and cooperating by sharing knowledge among people from anywhere in the world through the inclusion of technology.



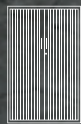
ADAPTA 2+



Adapta 2+



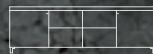
MAO



PV+



Eris



MAD

Bench desk of four workstations fitted with an operational auxiliary module to round off the workspace.

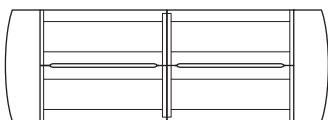
Bench à quatre postes équipé d'un module auxiliaire opérationnel pour compléter l'espace de travail.

Bench de 4 puestos equipado con módulo auxiliar operativo para facilitar el acceso a la zona de trabajo.

Extensión elíptica de mesa que permite incrementar el espacio y crea una zona intuitiva para trabajo colaborativo, ideal para el coworking.

Extension elliptique de bureau permettant d'agrandir l'espace et créant une zone intuitive pour le travail en collaboration, idéale pour le travail en groupe.

Elliptical desk extension which increases space and creates an intuitive collaborative work area that is ideal for co-working.



Adapta 2+



PV+

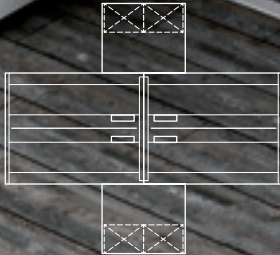


Eris



Obuc





Obuc

Adapta 2+



PV+



Eris



Obuc

Bench con ala y cajonera altura mesa, con nuevo sistema de un solo apoyo que libera el espacio entre cajonera y mesa.

Bench avec retour et caisson à hauteur de bureau, avec un nouveau système d'appui qui libère l'espace entre le caisson et le bureau.

Bench featuring return and desk high pedestal with a new single support system that frees up the space between pedestal and desk.



Adapta 2+



MAO



LP



Puestos compactos con faldón metálico troquelado (detalle) y cajonera alta mesa laminado, con nuevo zócalo que armoniza y da esbeltez a la cajonera.

Postes compacts avec voile de fond métallique percé (détail) et caisson à hauteur de bureau laminé, équipés d'un nouveau socle qui harmonise le caisson et le rend plus svelte.



Adapta 2+



CP

Compact workstations with steel modesty panel (detail) and melamine desk height pedestal with new base that brings harmony and grace to the drawer unit.



AD



Eris



Deneb

Solución completa de Adapta Plus con puesto individual y agrupado de trabajo, que hace evidente la versatilidad del sistema.

Solution complète d'Adapta Plus avec poste individuel et groupe de travail, qui rend évidente la polyvalence du système.

Full Adapta Plus solution with single and group workstations that demonstrate the system's versatility.



Adapta 2+



Obuc



AMT





Adapta 2+



AMT



Obuc



Ixion



Compact desk combining desk and return on a double leg with a new desktop shape with better design and ergonomics. Desks fitted with side wiring top access for the electrical area.

Plateau compact qui intègre un bureau et un retour sur pied double, avec à un meilleur design et une meilleure ergonomie. Bureaux équipés de câbles latéraux et top access pour la zone électrifiée.

Sobre compacto que integra mesa y ala sobre pata doble, con nueva forma de mejor diseño y ergonomía. Mesas equipadas con topaces lateral.

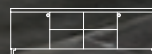




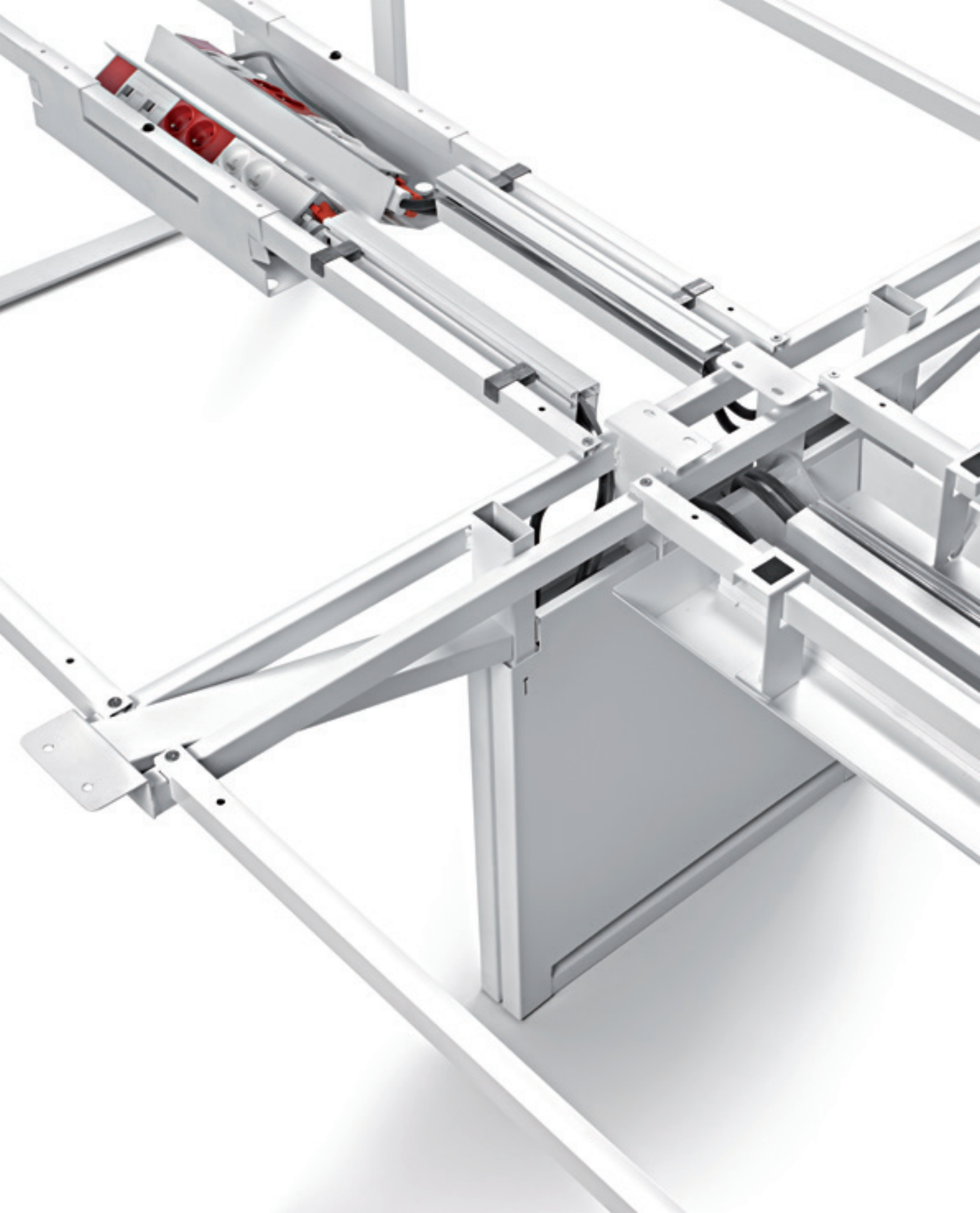
Adapta 2+

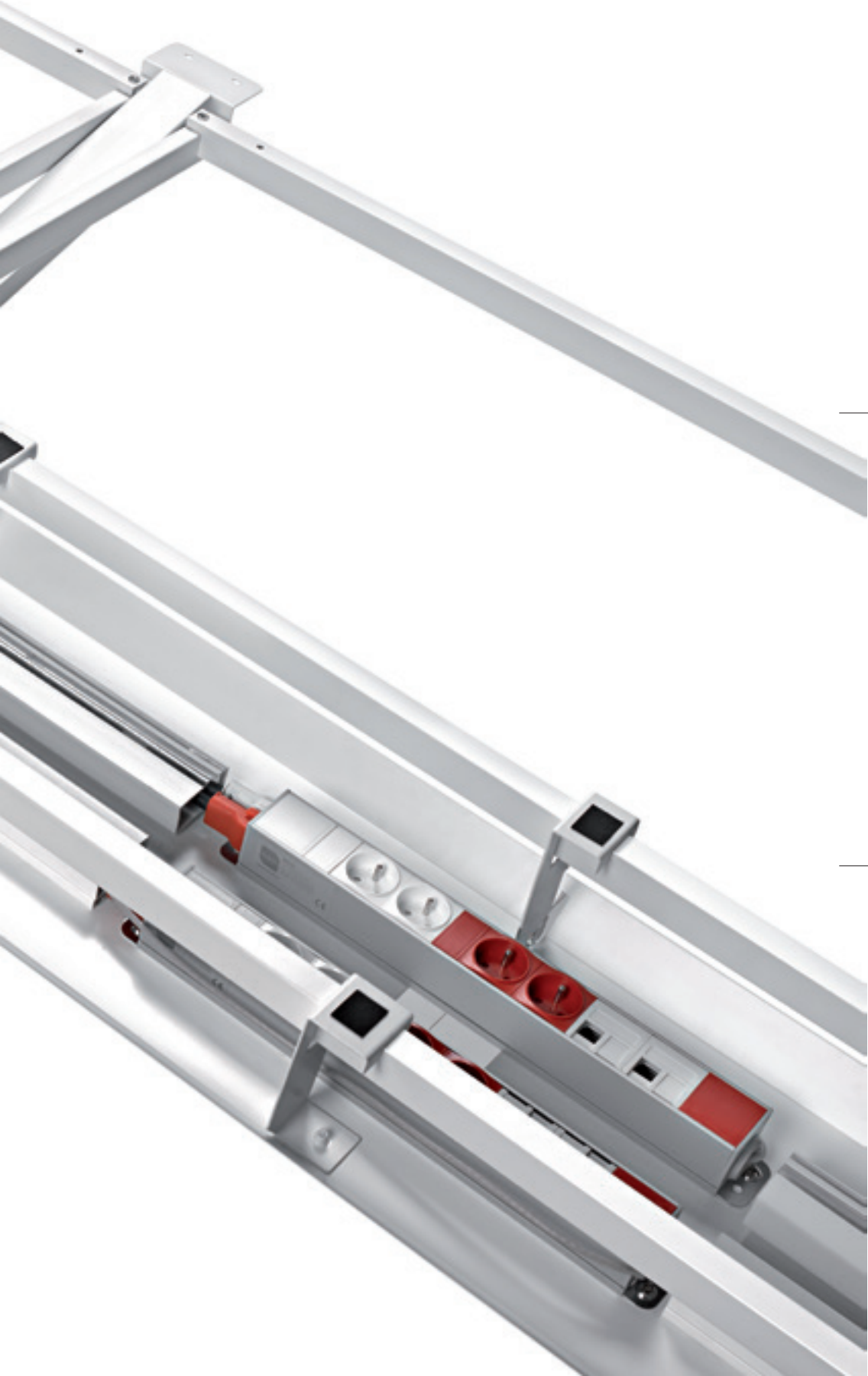


OBuc



MAD





Adapta Plus incorpora múltiples mejoras como la doble viga estructural, la pata panelada electrificada, la bandeja y canalizaciones pasacables y una solución integral para la electrificación, entre otras novedades.

Adapta Plus comprend plusieurs améliorations développées pour cette nouvelle génération, comme la double poutre structurelle, le pied panneau électrifié, le plateau et les passe-câbles, ainsi qu'une solution intégrale pour l'électrification, entre autres nouveautés.

Adapta Plus includes multiple improvements developed for this new generation such as a double frame beam, wiring panel leg, tray and wiring access and a comprehensive electric solution among other new features.



ADAPTA +

Solución en bench con patas intermedias paneladas, para una correcta gestión del cableado vertical.

Solution en bench à pieds panneau intermédiaires, permettant une bonne gestion des câbles verticaux ainsi qu'une meilleure organisation de l'espace.

Bench solution with panelled middle legs for vertical wiring to arrange space better.



Adapta +



PV+



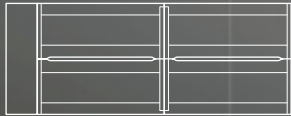
Eris



MAD



OBuc



Adapta +



AMT



Ixion



Tada



Obuc



Adapta Plus helps with integrating other JG components to create dynamic work environments. Methacrylate or melamine screen divider to provide visual privacy.

Adapta Plus facilite l'intégration d'autres composants JG, créant des environnements de travail plus dynamiques. Panneau séparateur en méthacrylate ou laminé, pour faciliter la séparation visuelle.

Adapta Plus facilita la integración de otros componentes JG, creando entornos de trabajo más dinámicos. Panel separador en metacrilato o laminado para facilitar privacidad visual.



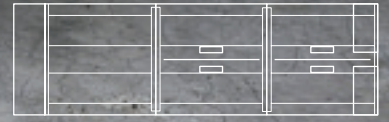
Obuc



Tada



Eris



Adapta +

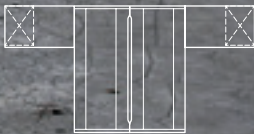




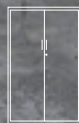
Complete solutions for sharing space in this desktop bench composition with return and desk height personalised in corporate colours.

Solutions complètes pour partager les espaces, dans cette composition bench à plateau avec retour et caisson hauteur de bureau personnalisée, à couleur corporative.

Soluciones completas para compartir espacios, bench con ala y cajonera altura mesa personalizada con color corporativo.



Adapta +



AMT



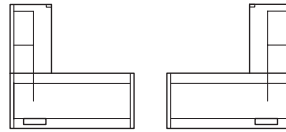
Eris



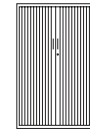
Obuc



Obuc



Adapta +



PV+



Eris



Deneb



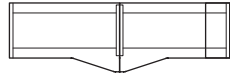
Obuc



Doble faldón lateral y frontal, una nueva solución para puestos de atención al público.

Double voile de fond lateral et frontal, une nouvelle solution pour les postes à service client.

Double front and side modesty panel, a new solution for customer service positions.



Adapta +



PV+



Eris



Tada



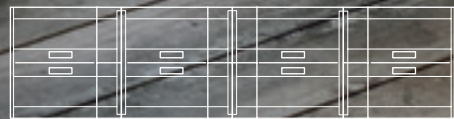
Obuc



Puestos de trabajo compartidos lateralmente, en una solución de pata intermedia única y sobre con forma en ola.

Postes de travail partagés latéralement, sur une solution à pied intermédiaire unique et plateau en forme d'aile.

Workstations shared sideways in a single middle leg and wave-shaped desktop solution.



Adapta +



Eris



LP



Obuc



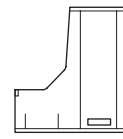




La nueva pata doble para Adapta, una mesa y ala en una sola estructura aportando mayor espacio y accesibilidad al usuario.

Le nouveau pied double pour Adapta, un bureau et un retour en une seule structure, qui apporte plus d'espace et d'accessibilité à l'utilisateur.

The new double leg for Adapta joins desk and return in a single structure to give the user more space and accessibility.



Adapta +



AMT



Eris



CP



Adapta +



MAO



LP



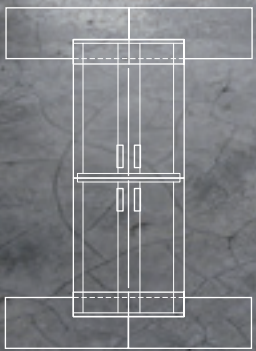
Eris

El Módulo Auxiliar Operativo se integra a diversas necesidades de trabajo individual o colaborativo.

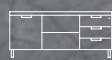


Le Module Auxiliaire Opérationnel s'adapte à divers besoins de travail individuel ou en collaboration.

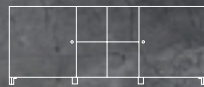
The Operational Auxiliary Module caters for a range of individual or collaborative work needs.



Adapta +



MA0



AD



Eris



MA



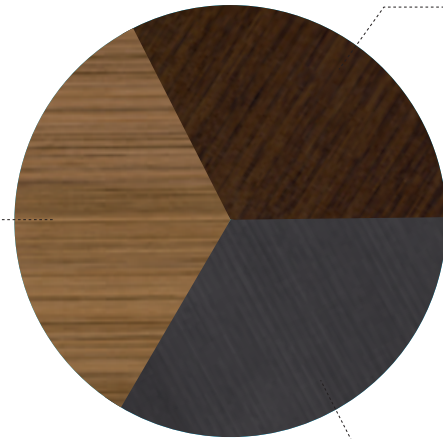
Bench completo con diversas soluciones para archivo y privacidad. Nuevos acabados en madera para Adapta Plus, en ébano, gris ceniza y teca.

Bench complet avec plusieurs solutions pour archives et confidentialité. Nouvelles finitions bois pour Adapta Plus, en ébène, gris cendre et thèque.

Complete bench with various filing and privacy solutions. New wood finishes for Adapta Plus in ebony, ash grey and teak.

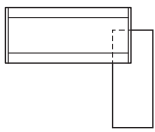
3 NUEVOS ACABADOS / 3 NOUVELLES FINITIONS / 3 NEW FINISHES

TECA / THÈQUE / **TEAK**

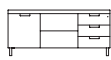


ÉBANO / ÉBÈNE / **EBONY**

GRIS CENIZA / GRIS CENDRE / **ASH GREY**



Adapta +



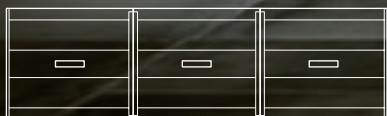
MAO



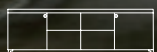


MEETING ZONE

Soluciones para encuentros manager.
Solutions pour réunions entre managers.
Direction meeting solutions.



Adapta +

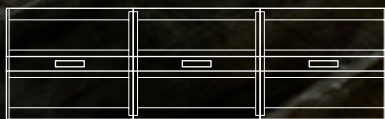


MAD

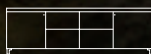


Tamaños singulares que integran soluciones para dar soporte a la última tecnología.

Dimensions singulières apportant des solutions pour donner support aux dernières technologies.



Adapta +



MAD

Unique sizes to integrate solutions to support the latest technology.



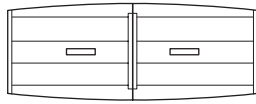




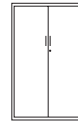
Adapta +



AMT



Adapta +



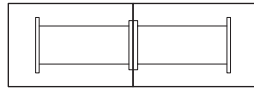
AMT



Soluciones globales para sus reuniones convencionales o improvisadas, en Adapta y Adapta2.

Solutions globales pour vos réunions officielles ou improvisées, sur Adapta et Adapta2.

Global solutions for your regular or casual meetings in Adapta and Adapta2.



Adapta 2+



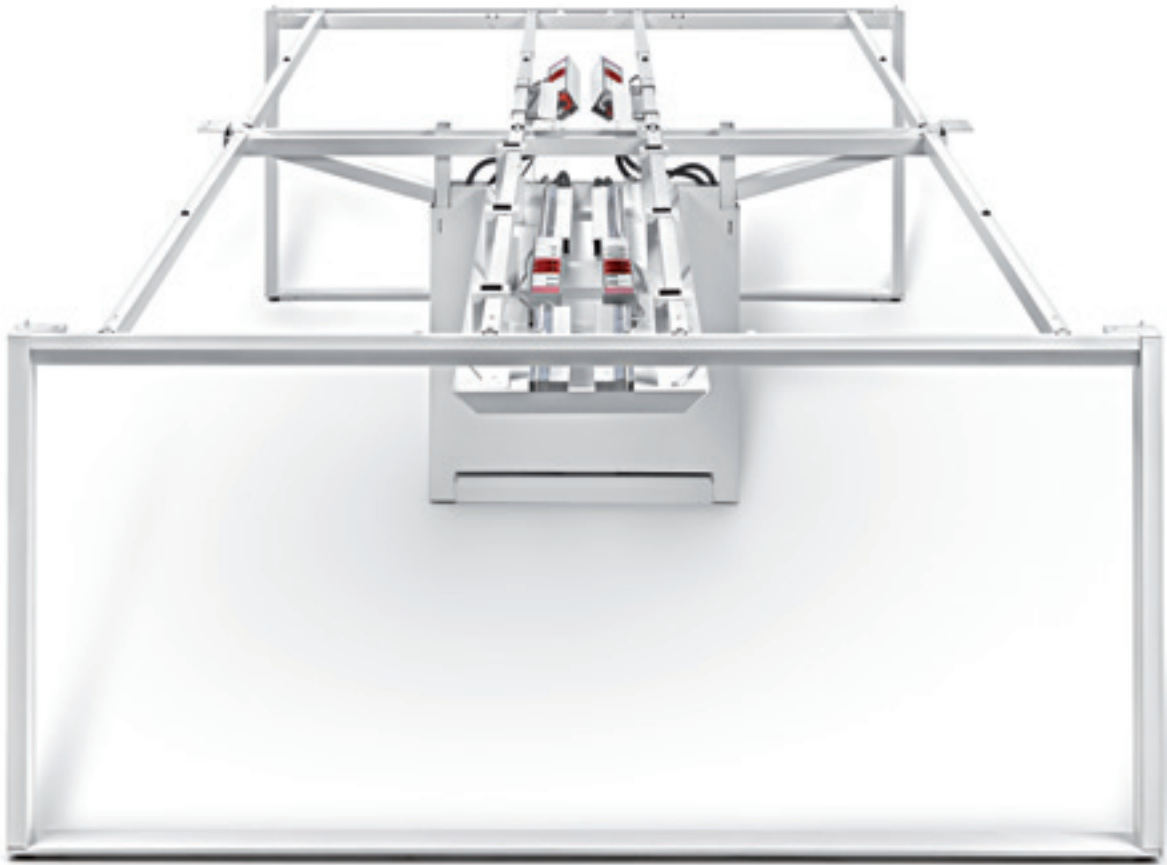
AMT



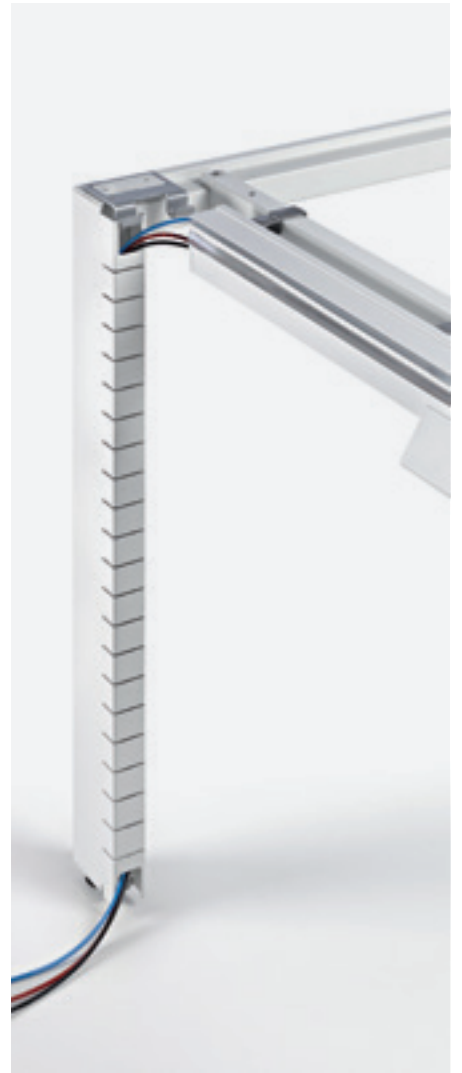
Top acces con sistema de apertura por ambos lados.
Top access avec système à ouverture des deux côtés.
With opening system on both sides

MY

ADAPTAPLUS



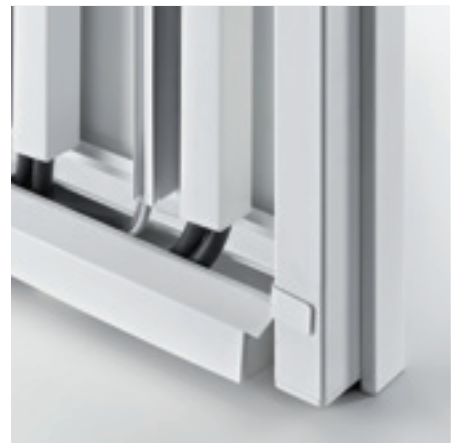
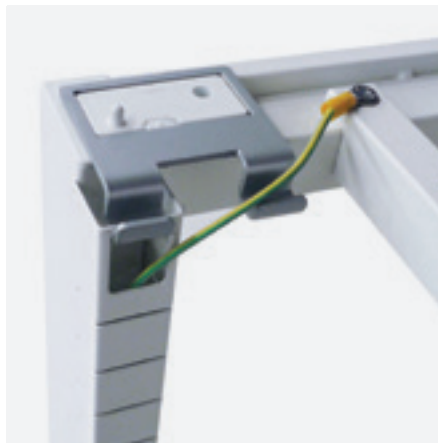




Adapta Plus incorpora diferentes soluciones para la correcta gestión del cableado y electrificación de sus elementos (Pata, sobre y módulos).

Adapta Plus apporte différentes solutions pour la gestion du câblage et l'électrification de ses éléments, sur pieds, plateaux et modules.

Adapta Plus includes a number of wiring and electric access solutions in legs, desktops and modules.





Sobres Compartidos con nueva forma para integrar paneles y acceso al cableado. Bandeja para Bench con sistema abatible para fácil acceso al cableado y conexiones

Plateaux partagés sous une nouvelle forme, afin d'intégrer les panneaux et l'accès au câblage. Plateau pour bench avec système abattable facilitant l'accès au câblage et aux connexions.

Shared desktops with a new shape to build in panels and wiring access. Bench tray with flip system for easy access to wiring and connections.

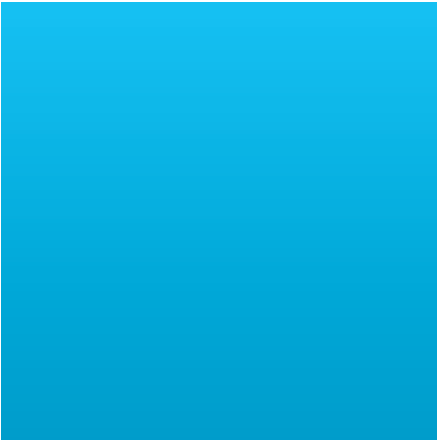


Sistema de soportes para incorporar separador o faldón mesa individual.

Système de supports afin d'incorporer le panneau de séparation ou voile de fond au bureau individuel.

Holder system to include a divider panel or individual desk modesty panel.

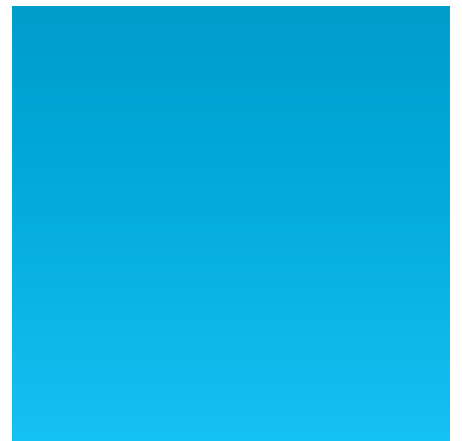


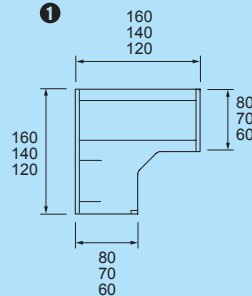
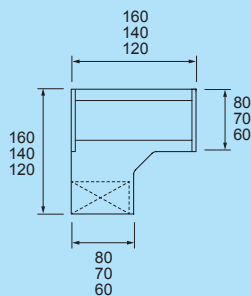
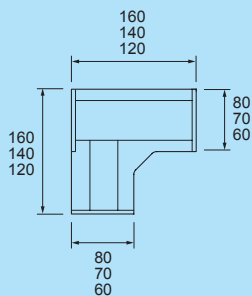
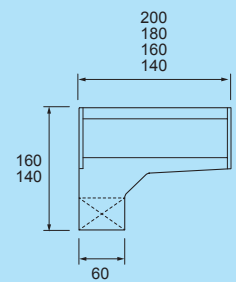
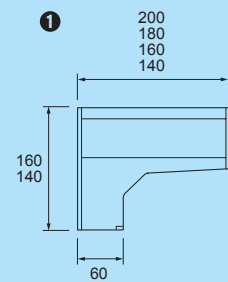
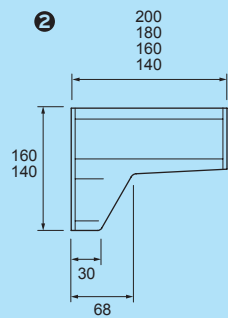
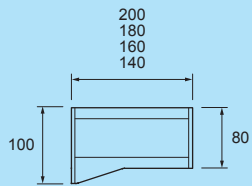
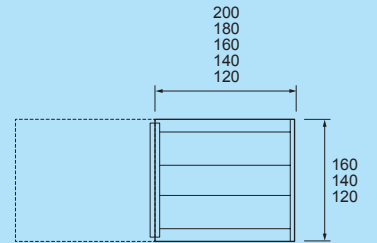
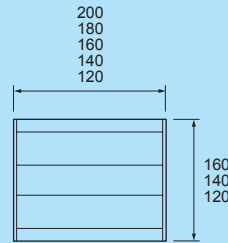
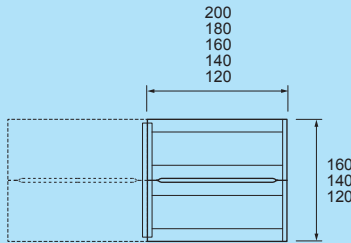
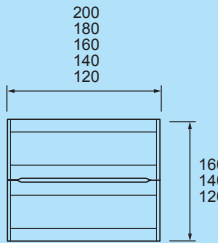
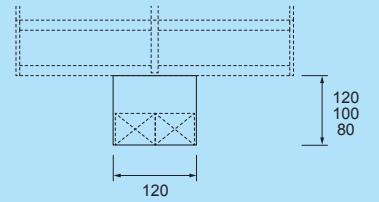
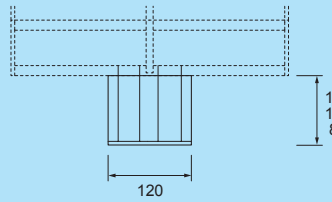
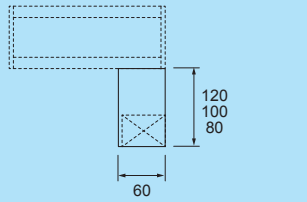
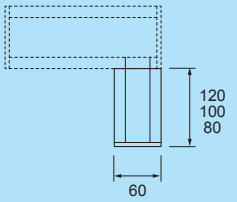
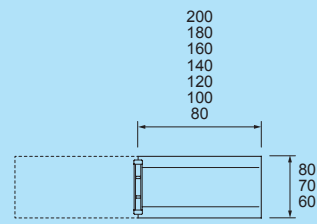
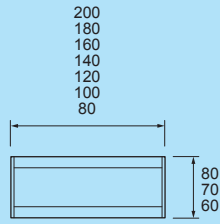
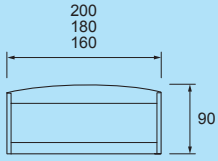
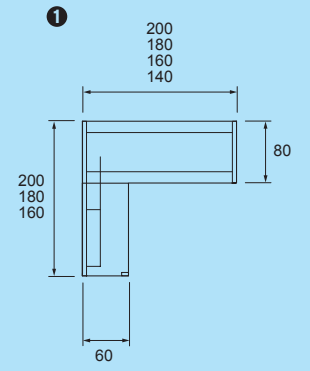
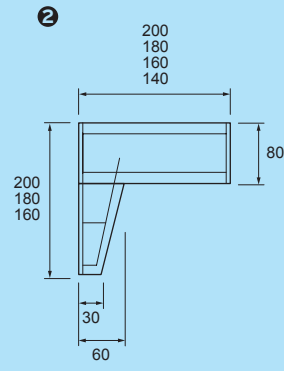
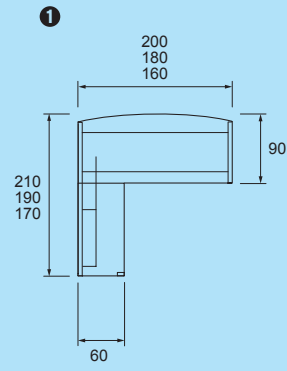
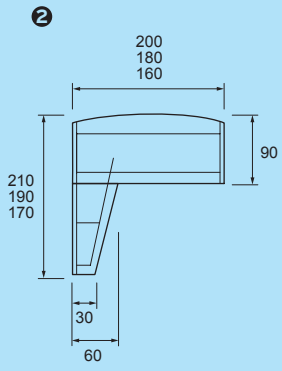


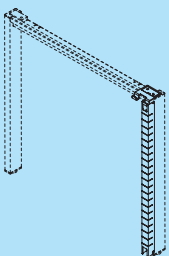
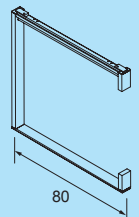
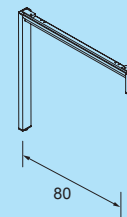
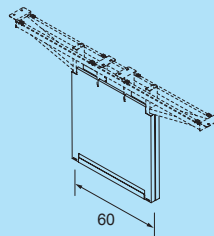
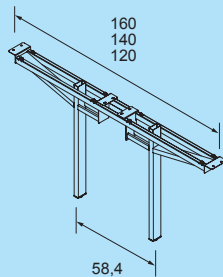
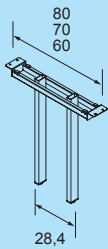
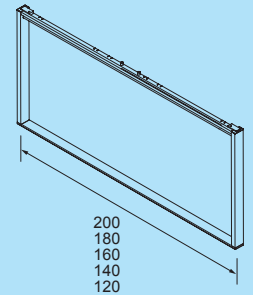
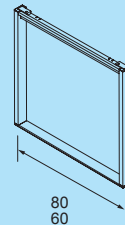
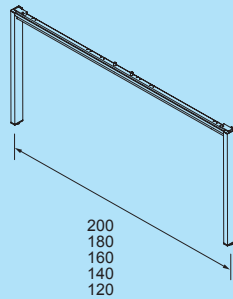
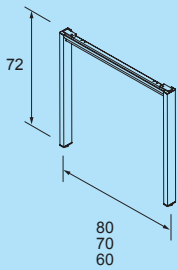
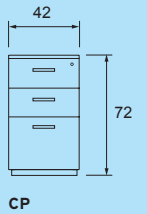
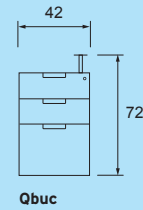
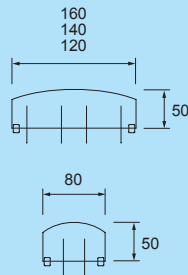
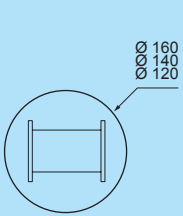
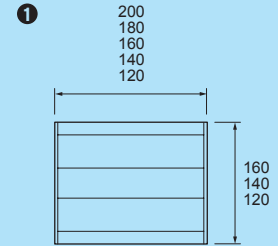
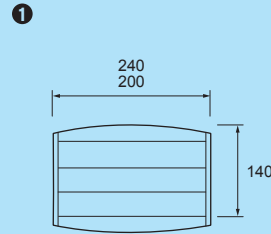
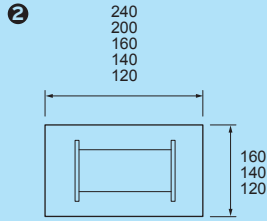
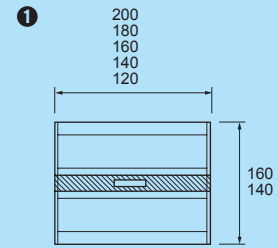
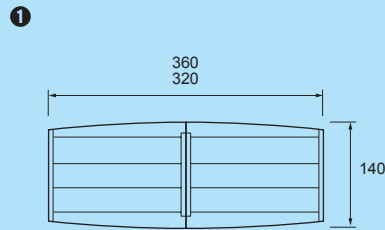
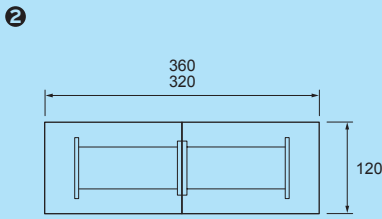
Módulo Auxiliar Operativo, para completar la serie Adapta Plus.

Module Auxiliaire Opérationnel, pour compléter la série Adapta Plus.

[Operational Auxiliary Module to complete the Adapta Plus series.](#)









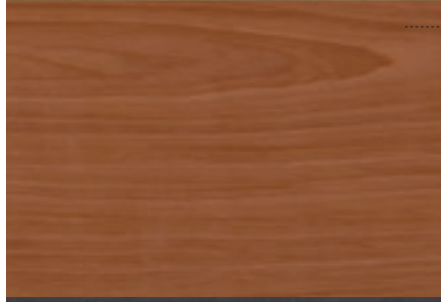



ACABADOS | FINITIONS | FINISHES

MELAMINA | MÉLAMINE | MELAMINE

H5	Haya 05 Hêtre 05 Beech 05	
W6	Wengué 06 Wengué 06 Wengué 06	
C3	Cerezo Merisier Cherry	
R6	Roble 06 Chêne 06 Oak 06	
B3	Blanco 9003 Blanc 9003 White 9003	
NO	Nogal Noyer Walnut	
DP	Dauphin Dauphin Dauphin	
A1	Arce 2011 Érable 2011 Maple 2011	
P3	Peral 2013 Poirier 2013 Pear 2013	
AR	Arena Sable Sand	
NE	Negro Noir Black	
TI	Titanio Titan Titanium	
AL	Aluminio Aluminium Aluminium	
NA	Naranja Orange Orange	
AZ	Azul Bleu Blue	
VE	Verde Vert Green	

MADERA BARNIZADA | PLACAGE BOIS VERNI | WOOD VENEER

MR6	Madera Roble 06 Placage Chêne 06 Oak 06 Wood veneer	
MEB	Ébano Ébène Ebony	
MTE	Teca Thèque Teak	
CE	Madera Cerezo Placage Cerisier Cherry Wood veneer	
MGR	Gris Ceniza Gris Cendre Ash Grey	

Los colores y materiales representados en dicha publicación pueden diferir ligeramente de la realidad debido a los límites de impresión.
Les coloris et les matériaux peuvent différer légèrement de la réalité du aux limitations du système d'impression.
Colours and materials displayed in this brochure can differ slightly from reality due to the printing limitations.

ACABADOS | FINITIONS | FINISHES

METACRILATO TRANSLUCIDO | MÉTHACRYLATE TRANSLUCIDE | PLEXIGASS

BN
Blanco Nieve
Blanc Neige
Snow White

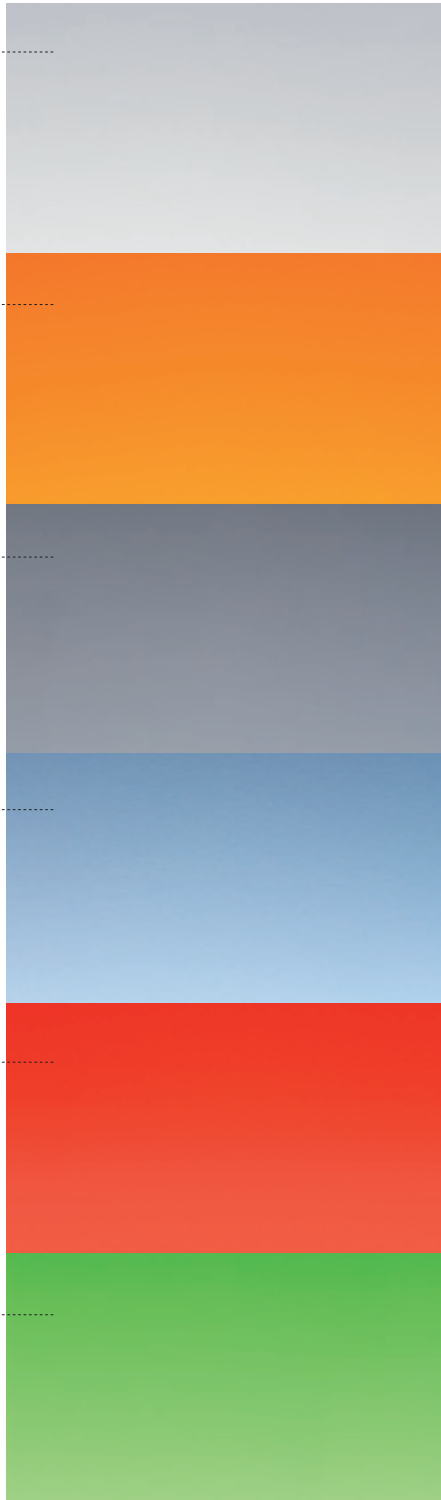
NA
Naranja
Orange
Orange

GR
Gris
Gris
Grey

AZ
Azul
Bleu
Blue

RO
Rojo
Rouge
Red

VE
Verde
Vert
Green



METAL EPOXY | MÉTAL EPOXY | EPOXY METAL

B3
Blanco 9003
Blanc 9003
White 9003

AT
Aluminio Texturado
Aluminium Texturé
Textured Aluminium

TI
Titanio
Titan
Titanium



Los colores y materiales representados en dicha publicación pueden diferir ligeramente de la realidad debido a los límites de impresión.
Les coloris et les matériaux peuvent différer légèrement de la réalité du aux limitations du système d'impression.
Colours and materials displayed in this brochure can differ slightly from reality due to the printing limitations.

QUALITY AND ECOLOGY



CALIDAD Y ECOLOGÍA | QUALITY AND ECOLOGY | QUALITÉ ET ECOLOGIE

JG dispone desde hace años de la certificación de calidad **ISO 9001** y del sello **CIDEMCO**, entidad que verifica y homologa las materias primas y el cumplimiento de las diferentes normativas europeas aplicables al mobiliario de oficina.

En política de respeto al medioambiente, JG ha implementado y certificado todas las medidas recogidas en la normas **ISO 14001** e **ISO 14006**, y también ofrece bajo demanda la certificación forestal de la cadena de custodia por los sistemas **PEFC** y **FSC**, garantizando que la madera utilizada procede de una gestión forestal sostenible.

El cumplimiento de todas estas normas facilita la obtención de puntos **LEED** con nuestros productos.

JG dispose depuis plusieurs années, du certificat de qualité **ISO 9001**, et du label **CIDEMCO**, entité qui vérifie et homologue les matières premières, et certifie la conformité aux différentes normes européennes applicables au mobilier de bureau.

En ce qui concerne notre politique de respect pour l'environnement, JG a implanté et certifié toutes les directives recueillies dans les normes **ISO 14001** et **ISO 14006**, et offre aussi sous demande du client, la certification forestière selon système **PEFC** et **FSC**, en garantissant que la matière utilisée provient d'exploitations à bois soutenables.

La conformité à toutes ces normes, facilite l'obtention de points **LEED** avec nos produits.

JG has the quality certification **ISO 9001** and **CIDEMCO** for years, institution that verifies and standardizes raw material and compliance with European norms applicable to office furniture.

Regarding to environmental policy, JG has implemented and certified all the measures contained in the ISO standards **14001** and **ISO 14006**, and also supplies by demand the forest certification of chain of custody for **PEFC** and **FSC** systems, ensuring that the wood used comes from sustainable forest management.

Compliance with these standards facilitates obtaining **LEED** points with our products.

